
Bias-Corrected Peaks-Over-Threshold Estimation of the CVaR

Dylan Troop¹

Frédéric Godin²

Jia Yuan Yu³

¹Department of Computer Science and Software Engineering, Concordia University, Montreal, Canada

²Department of Mathematics and Statistics, Concordia University, Montreal, Canada

³Concordia Institute for Information Systems Engineering, Concordia University, Montreal, Canada

Abstract

The conditional value-at-risk (CVaR) is a useful risk measure in fields such as machine learning, finance, insurance, energy, etc. When measuring very extreme risk, the commonly used CVaR estimation method of sample averaging does not work well due to limited data above the value-at-risk (VaR), the quantile corresponding to the CVaR level. To mitigate this problem, the CVaR can be estimated by extrapolating above a lower threshold than the VaR using a generalized Pareto distribution (GPD), which is often referred to as the peaks-over-threshold (POT) approach. This method often requires a very high threshold to fit well, leading to high variance in estimation, and can induce significant bias if the threshold is chosen too low. In this paper, we address this bias-variance tradeoff by deriving a new expression for the GPD approximation error of the CVaR, a bias term induced by the choice of threshold, as well as a bias correction method for the estimated GPD parameters. This leads to the derivation of a new CVaR estimator that is asymptotically unbiased and less sensitive to lower thresholds being used. An asymptotic confidence interval for the estimator is also constructed. In a practical setting, we show through experiments that our estimator provides a significant performance improvement compared with competing CVaR estimators in finite samples from heavy-tailed distributions.

severe outcomes. Recently, risk-averse machine learning has become an important area of study, especially in the context of multi-armed bandits and reinforcement learning, for example, Chow and Ghavamzadeh [2014], Tamar et al. [2015], Keramati et al. [2020], Torossian et al. [2019] and Hiraoka et al. [2019]. Most often, the risk measure of interest is the *conditional value-at-risk* (CVaR). Given a random variable X representing losses (i.e., where larger values are less desirable), the CVaR at a confidence level $\alpha \in (0, 1)$ measures the expected value of X given that X exceeds the quantile at α . This quantile is referred to as the *value-at-risk* (VaR). Compared to the VaR, the CVaR captures more information about the weight of a distribution's tail, making it a more useful object of study in risk-averse decision making. In practice, the CVaR is usually estimated by averaging observations above the estimated VaR, which we call the *sample average* estimator of the CVaR. When α is close to 1, these observations can be very scarce in small samples leading to volatile estimates of the CVaR. This work is motivated by a lack of reliable estimators and performance guarantees for the CVaR at these extreme levels.

In this paper, we consider estimating the CVaR of *heavy-tailed random variables*, which are ubiquitous in areas such as finance, insurance, energy, and epidemiology, e.g., Manz and Mansmann [2020]. In this setting, extreme events correspond to very large observations (and hence severe losses), which is in contrast to the light- or short-tailed cases where similar low probability events are closer to the mean. Extreme value theory provides the tools to construct a new CVaR estimator that is appropriate for this setting. By selecting a threshold lower than the VaR, it is possible to approximate the tail distribution of a random variable by using a *generalized Pareto distribution* (GPD) and extrapolating beyond available observations. The estimation of quantities using this approximation is commonly referred to as the *peaks-over-threshold* (POT) approach. To the best of our knowledge, the only existing CVaR estimator based on the POT approach is given in, for example, McNeil et al. [2005, Section 7.2.3], where the CVaR is referred to as the

1 INTRODUCTION

Traditional machine learning algorithms typically consider the expected value of a random variable as the target to optimize. In a risk-averse setting, the objective function needs to be adapted to consider the full distribution and account for

expected shortfall. This estimator suffers from one of the main drawbacks of the POT approach, which is the difficult bias-variance tradeoff in selecting the threshold. Unless the threshold is chosen very high, the estimator will encounter two sources of potentially significant bias: the deviation between the GPD and the true tail distribution, and the bias associated with parameter estimation using the approximate GPD tail data. Perhaps even more significantly, the CVaR estimator of McNeil et al. [2005] comes with no performance guarantees unless one assumes exactness of the GPD approximation and of the empirical distribution function. Therefore, it has not been previously possible to determine the precise conditions where the POT approach for CVaR estimation is actually superior to the more common sample average estimator, which has measures of uncertainty established in Brown [2007], Thomas and Learned-Miller [2019], Kolla et al. [2018, 2019], Bhat and L.A. [2019], Kagracha et al. [2019] (concentration bounds), and Trindade et al. [2007], Brazauskas et al. [2008], Sun and Hong [2010] (asymptotic confidence intervals).

Major contributions. First, we derive the *GPD approximation error*, a deterministic quantity measuring the deviation between the GPD approximation of the CVaR and its true value. We then derive bias-corrected maximum likelihood estimators for the GPD parameters, ξ and σ , using the POT approach, which in turn requires the derivation of a new estimator for a second-order parameter that may be of independent interest. Using our bias correction methods, a new estimator for the CVaR based on the POT approach is derived which we prove is asymptotically unbiased. Using our convergence result, we derive a confidence interval for the CVaR which has asymptotically correct coverage probability.

The remainder of this paper is organized as follows. In section 2, the VaR and CVaR are formally defined, and the sample average estimator of the CVaR is given. Needed background from extreme value theory and second-order regular variation is presented, along with the CVaR approximation based on the POT approach. Section 3 derives the GPD approximation error for the CVaR and its asymptotic behaviour. In section 4, bias-corrected maximum likelihood estimators for the GPD parameters are derived, as well as details on second-order parameter estimation, which play an important role in bias correction. Section 5 establishes an estimator for the GPD approximation error, and our results are consolidated to give the unbiased POT estimator for the CVaR. In section 6, simulations are shown to provide empirical evidence of the finite sample performance of our estimator on data, and Section 7 concludes. All proofs and additional details for experiments are provided in the appendix in the supplementary material, along with code to reproduce our results.

2 PRELIMINARIES

Let X denote a random variable and F its corresponding cumulative distribution function (cdf). In this paper, we adopt the convention that X represents a loss, so larger values of X are less desirable.

Definition 2.1 (Value-at-Risk). *The value-at-risk of X at level $\alpha \in (0, 1)$ is*

$$q_\alpha \triangleq \text{VaR}_\alpha(X) = \inf\{x \in \mathbb{R} | F(x) \geq \alpha\}. \quad (1)$$

$\text{VaR}_\alpha(X)$ is equivalent to the quantile at level α of F . If the inverse of F exists, $\text{VaR}_\alpha(X) = F^{-1}(\alpha)$. The VaR can be estimated in the same way as the standard empirical quantile. Let X_1, \dots, X_n be i.i.d. random variables with common cdf F . Let $X_{(1,n)} \leq X_{(2,n)} \dots \leq X_{(n,n)}$ denote the set of order statistics for the sample of size n , i.e., the sample sorted in non-decreasing order. An estimator for the VaR is

$$\widehat{\text{VaR}}_{n,\alpha}(X) = \min \left\{ X_{(i,n)} \mid i = 1, \dots, n; \hat{F}_n(X_{(i,n)}) \geq \alpha \right\} = X_{(m,n)},$$

where \hat{F}_n denotes the empirical cdf and $m = \lceil \alpha n \rceil$. We now define the CVaR as in Acerbi and Tasche [2002]. The current work will only consider continuous random variables.

Definition 2.2 (Conditional Value-at-Risk). *The conditional value-at-risk of a continuous random variable X at level $\alpha \in (0, 1)$ is*

$$c_\alpha \triangleq \text{CVaR}_\alpha(X) = \mathbb{E}[X | X \geq \text{VaR}_\alpha(X)] = \frac{1}{1-\alpha} \int_\alpha^1 \text{VaR}_\gamma(X) d\gamma. \quad (2)$$

Typical values of α are 0.95, 0.99, 0.999, etc. Besides the CVaR, expectile-based approaches to risk estimation can be considered, such as in Daouia et al. [2018], Girard et al. [2021]. Expectile-based risk estimation comes with the advantage of the elicibility property but is arguably more difficult to understand and implement than CVaR, making it less common outside of financial risk management. We leave such discussion out-of-scope in the current work.

The CVaR can be estimated by averaging observations above $\text{VaR}_\alpha(X)$. This estimator is given by

$$\widehat{\text{CVaR}}_{n,\alpha}(X) = \frac{\sum_{i=1}^n X_i \mathbb{1}_{\{X_i \geq \widehat{\text{VaR}}_{n,\alpha}(X)\}}}{\sum_{j=1}^n \mathbb{1}_{\{X_j \geq \widehat{\text{VaR}}_{n,\alpha}(X)\}}}. \quad (3)$$

The use of the eq. (3) can be problematic when the confidence level α is high due to the scarcity of extreme observations. We now provide tools from extreme value theory to address this problem.

Let $F^n(x) = \mathbb{P}(\max(X_1, \dots, X_n) \leq x)$ denote the cdf of the sample maxima. Suppose there exists a sequence of real-valued constants $a_n > 0$ and b_n , $n = 1, 2, \dots$, and a nondegenerate cdf H such that $\lim_{n \rightarrow \infty} F^n(a_n x + b_n) = H(x)$ for all x , where *nondegenerate* refers to a distribution not concentrated at a single point. The class of distributions F that satisfy this limit are said to be in the *maximum domain of attraction of H* , denoted $F \in \text{MDA}(H)$. The Fisher–Tippett–Gnedenko theorem (see De Haan and Ferreira [2006, Theorem 1.1.3]) states that H must then be a *generalized extreme value distribution (GEVD)*,¹ i.e., if $F \in \text{MDA}(H)$, then there exists a unique $\xi \in \mathbb{R}$ such that $H = H_\xi$. It is important to note that essentially all common continuous distributions used in applications are in $\text{MDA}(H_\xi)$ for some value of ξ . When $\xi > 0$, F is a *heavy-tailed distribution*, defined next.

Definition 2.3 (Heavy-tailed random variable). *Let X be a random variable with cdf F . Then X (or F) is heavy-tailed if $F \in \text{MDA}(H_\xi)$ with $\xi > 0$.*

If F is heavy-tailed, then moments of order greater than or equal to $1/\xi$ do not exist. Otherwise, F is light-tailed with a tail having exponential decay ($\xi = 0$), or the right endpoint of F is finite ($\xi < 0$). If $\xi \geq 1$, then F has infinite mean, and therefore the true CVaR, eq. (2), is also infinite. For the remainder of this paper, we assume the following condition is satisfied.

Assumption 2.1. *F is heavy-tailed with $\xi < 1$.*

When $F \in \text{MDA}(H_\xi)$, there exists a useful approximation of the distribution of sample extremes above a threshold, and we define this distribution next. We denote the tail distribution $\bar{F} = 1 - F$.

Definition 2.4 (Excess distribution function). *For a given threshold $u \geq \text{ess inf } X$, the excess distribution function is defined as*

$$\begin{aligned} F_u(y) &= \mathbb{P}(X - u \leq y | X > u) \\ &= \frac{[F(y + u) - F(u)]}{\bar{F}(u)}, \quad y \geq 0. \end{aligned}$$

Note that the domain of F_u is $[0, \infty)$ under assumption 2.1. The y -values are referred to as the *threshold excesses*. Given that X has exceeded some high threshold u , this function represents the probability that X exceeds the threshold by at most y . The Pickands-Balkema-de Haan theorem states that F_u can be well-approximated by the GPD, which we give now.

Theorem 2.1 (Pickands III [1975], Balkema and De Haan [1974]). *Suppose assumption 2.1 is satisfied. Then, there*

¹For $\xi > 0$, the GEVD has cdf $H_\xi(x) = \exp(-(1 + \xi x)^{-1/\xi})$ over its support, which is $[-1/\xi, \infty)$.

exists a positive function $\sigma = \sigma(u)$ such that

$$\lim_{u \rightarrow \infty} \sup_{0 \leq y \leq \infty} |F_u(y) - G_{\xi, \sigma}(y)| = 0, \quad (4)$$

where $G_{\xi, \sigma}$ is the generalized Pareto distribution, which for $\xi \neq 0$ has a cdf and density function given by, respectively,

$$G_{\xi, \sigma}(y) = 1 - \left(1 + \frac{\xi y}{\sigma}\right)^{-1/\xi}, \quad g_{\xi, \sigma}(y) = \frac{1}{\sigma} \left(1 + \frac{\xi y}{\sigma}\right)^{-1/\xi - 1}. \quad (5)$$

Using theorem 2.1, it is quite straightforward to derive approximate formulas for the VaR and CVaR using the definition of the excess cdf and eqs. (1) and (2), for example, see McNeil et al. [2005, Section 7.2.3]. Before stating these formulas, we make precise the choice of function $\sigma(u)$ in theorem 2.1, which we give next after some needed definitions. Let $U = (1/\bar{F})^{-1}$, the functional inverse of $1/\bar{F}$. Assume such U exists and is twice-differentiable. The following functions will become important tools for characterizing the tail behaviour of F .

Definition 2.5. *The first- and second-order auxiliary functions are defined as, respectively,*

$$a(t) = tU'(t), \quad A(t) = \frac{tU''(t)}{U'(t)} - \xi + 1. \quad (6)$$

For the remainder of this paper, let $\sigma(u) = a(1/\bar{F}(u))$. It is proven in Raoult and Worms [2003, Corollary 1], with different notation, that eq. (4) achieves the optimal rate of convergence with $\sigma(u) = a(1/\bar{F}(u))$ when the following condition on A holds, which we assume to be true for the rest of this paper.

Assumption 2.2. *If $F \in \text{MDA}(H_\xi)$, the second-order auxiliary function A exists and satisfies the following conditions: (1) $\lim_{t \rightarrow \infty} A(t) = 0$, (2) A is of constant sign in a neighborhood of ∞ , (3) $\exists \rho \leq 0$ such that $|A| \in \text{RV}_\rho$.²*

While assumption 2.2 may seem restrictive at first glance, it is in fact a very general condition, satisfied for all common distributions that belong to a maximum domain of attraction [Drees et al., 2004]. Counterexamples are fairly contrived and rarely seen in practice, e.g., De Haan and Ferreira [2006, Exercise 2.7 on p. 61].

Now, with a precise definition of $\sigma(u)$, we state the approximations for the VaR and CVaR which follow from theorem 2.1. For the rest of this paper, we shall denote $s_{u, \alpha} = \bar{F}(u)/(1 - \alpha)$.

Definition 2.6 (POT approximations). *Suppose that assumption 2.1 and assumption 2.2 are satisfied. Fix $u \in \mathbb{R}$*

²A positive, measurable function f is *regularly varying* with unique index ρ , denoted $f \in \text{RV}_\rho$, if $\lim_{x \rightarrow \infty} f(tx)/f(x) = t^\rho$ for all $t > 0$.

and let $\sigma = a(1/\bar{F}(u))$. Then, the POT approximations for the VaR and CVaR are given by, respectively,

$$q_{u,\alpha} = u + \frac{\sigma}{\xi} (s_{u,\alpha}^\xi - 1), \quad c_{u,\alpha} = u + \frac{\sigma}{1-\xi} \left(1 + \frac{s_{u,\alpha}^\xi - 1}{\xi} \right). \quad (7)$$

The accuracy of the POT approximations depends on how high of a threshold is used. When these approximations are used in statistical estimation, a lower threshold is preferable to make use of as much data as possible, but this can induce a significant bias. To estimate this bias, explicit expressions are required for the approximation error when using eq. (7). In the next section, we derive these expressions.

3 GPD APPROXIMATION ERROR

When applying the POT approximation for the CVaR, there is a deviation between $c_{u,\alpha}$ and c_α that can be quantified asymptotically. We define this deviation as follows.

Definition 3.1. *The GPD approximation error (of the CVaR) at level α and threshold u is defined as*

$$\epsilon_{u,\alpha} \triangleq c_{u,\alpha} - c_\alpha.$$

Note that when we do not consider parameter estimation, $\epsilon_{u,\alpha}$ is a deterministic quantity. In this section, the asymptotic behaviour of $\epsilon_{u,\alpha}$ as $u \rightarrow \infty$ is derived, which leads to a useful approximation for finite u . For the rest of this paper, we shall denote $\tau_u = 1/\bar{F}(u)$.

Theorem 3.1. *Suppose assumption 2.1 and assumption 2.2 hold. Let $\alpha = \alpha_u = 1 - \bar{F}(u)/\beta$, where $\beta > 1$ is a constant not depending on u . Then,*

$$\frac{\epsilon_{u,\alpha}}{a(\tau_u)A(\tau_u)K_{\xi,\rho}(\beta)} \rightarrow 1 \quad \text{as } u \rightarrow \infty,$$

where

$$K_{\xi,\rho}(\beta) = \begin{cases} \frac{1}{\rho} \left(\frac{\beta^\xi}{\xi(1-\xi)} - \frac{1}{\xi+\rho} \left(\frac{\beta^{\xi+\rho}}{(1-\xi-\rho)} + \frac{\rho}{\xi} \right) \right), & \rho < 0, \xi + \rho \neq 0, \\ \frac{1}{\rho} \left(\frac{\beta^\xi}{\xi(1-\xi)} - \log \beta + \frac{\xi-1}{\xi} \right), & \rho < 0, \xi + \rho = 0, \\ \frac{\beta^\xi}{\xi(1-\xi)} \left(\frac{1-2\xi}{\xi(1-\xi)} - \log \beta \right) + \frac{1}{\xi^2}, & \rho = 0. \end{cases} \quad (8)$$

In practice, we would typically be interested in the CVaR at a fixed value of α , so it may appear unsatisfactory that $\alpha \rightarrow 1$ in theorem 3.1. However, a useful approximation in the non-asymptotic setting which holds for large u is $\epsilon_{u,\alpha} \approx a(\tau_u)A(\tau_u)K_{\xi,\rho}(s_{u,\alpha})$, which is valid as long $\alpha > F(u)$. In subsequent sections, we derive estimators for all needed quantities to estimate $c_{u,\alpha}$ and $\epsilon_{u,\alpha}$ (and thus c_α) from data, namely the parameters ξ, σ, ρ , and function A , leading to an asymptotically unbiased estimator of c_α .

4 PARAMETER ESTIMATION

In this section, we discuss the estimation of ξ, σ, ρ , and A . The starting point is to first select a threshold u , and then estimate ξ and σ using maximum likelihood with the threshold excesses above u . Let $X_{(1,n)} \leq X_{(2,n)} \dots \leq X_{(n,n)}$ denote the order statistics for a sample of size n . Let $u = X_{(n-k,n)}$ for some value of $k = k_n < n$. Then, the threshold excesses $Y_i = X_{(n-k+i,n)} - u, i = 1, \dots, k$ are i.i.d. [De Haan and Ferreira, 2006, Section 3.4] and approximately distributed by a GPD (theorem 2.1). Maximum likelihood estimators (MLEs) are obtained by maximizing the approximate log-likelihood function with respect to ξ and σ ,

$$(\hat{\xi}_{\text{MLE}}^{(n)}, \hat{\sigma}_{\text{MLE}}^{(n)}) = \arg \max_{\xi, \sigma} \sum_{i=1}^k \log g_{\xi, \sigma}(Y_i). \quad (9)$$

Based on partial derivatives of the log-pdf with respect to parameters, the resulting maximum likelihood first-order conditions when $\xi > 0$ are given by

$$\frac{1}{k} \sum_{i=1}^k \log \left(1 + \frac{\xi Y_i}{\sigma} \right) = \xi, \quad \frac{1}{k} \sum_{i=1}^k \frac{Y_i}{\sigma + \xi Y_i} = \frac{1}{\xi + 1}. \quad (10)$$

A closed-form solution to eq. (10) does not exist, but the MLEs can be obtained numerically through standard software packages. See, for example, Grimshaw [1993] for an overview of the commonly implemented algorithm.

While the usual asymptotic theory of maximum likelihood does not apply in the approximate GPD model, the following theorem establishes the fact that the MLEs are asymptotically normal with a biased mean as long as the number of threshold excesses is chosen suitably. We will include a correction for the asymptotic bias in an estimator for the CVaR subsequently. The following theorem is given in De Haan and Ferreira [2006, Theorem 3.4.2].

Theorem 4.1. *Suppose that assumption 2.1 and assumption 2.2 hold. Then for $k = k_n \rightarrow \infty$ and $k/n \rightarrow 0$ as $n \rightarrow \infty$, if $\lim_{n \rightarrow \infty} \sqrt{k}A(n/k) = \lambda < \infty$, then the MLEs satisfy*

$$\sqrt{k}(\hat{\xi}_{\text{MLE}}^{(n)} - \xi, \hat{\sigma}_{\text{MLE}}^{(n)}/a(n/k) - 1) \xrightarrow{d} N(\lambda b_{\xi,\rho}, \Sigma),$$

where N denotes the normal distribution and

$$b_{\xi,\rho} = \begin{pmatrix} b_{\xi,\rho}^{(1)} \\ b_{\xi,\rho}^{(2)} \end{pmatrix} = \begin{pmatrix} \xi + 1, -\rho \\ (1-\rho)(1+\xi-\rho) \end{pmatrix}, \quad (11)$$

$$\Sigma = \begin{bmatrix} (1+\xi)^2 & -(1+\xi) \\ -(1+\xi) & 1 + (1+\xi)^2 \end{bmatrix}.$$

For the remaining theory sections of this paper, let $u = u_n = X_{(n-k,n)}$. In the assumption of theorem 4.1, it does not seem possible to give conditions to guarantee $\sqrt{k}A(n/k) \rightarrow \lambda < \infty$ in full generality, but a common

approach when working with heavy-tailed distributions is to assume that they belong to the Hall class [Hall, 1982], which nests those most often seen in practice, for example, the Burr, Fréchet, Student, Cauchy, Pareto, F , stable etc. The Hall class satisfies assumption 2.2 with $A(t) = ct^\rho$ for some constant $c \in \mathbb{R}$, and so to ensure convergence we only require that $k = O(n^{-2\rho/(1-2\rho)})$.

To obtain an asymptotically unbiased estimator of the CVaR, we will first correct the asymptotic bias in theorem 4.1, which requires estimating ρ , $A(n/k)$ and $b_{\xi, \rho}$.

Estimation of ρ . Let

$$M_n^{(j)}(m) = \frac{1}{m} \sum_{i=1}^m [\log X_{(n-i+1, n)} - \log X_{(n-m, n)}]^j,$$

$$T_n^{(\tau)}(m) = \frac{(M_n^{(1)}(m))^\tau - (M_n^{(2)}(m)/2)^\tau}{(M_n^{(2)}(m)/2)^\tau - (M_n^{(3)}(m)/6)^\tau}, \quad \tau \in \mathbb{R},$$

with the notation $a^{b\tau} = b \log a$ if $\tau = 0$. Then, an estimator for ρ is given by Fraga Alves et al. [2003, Equation 2.18],

$$\hat{\rho}_n = \frac{3(T_n^{(\tau)}(m) - 1)}{T_n^{(\tau)}(m) - 3}. \quad (12)$$

The number of upper order statistics chosen to estimate ρ is usually much larger than the choice used to estimate (ξ, σ) , i.e., $m > k$. It is shown in Fraga Alves et al. [2003] that $\hat{\rho}_n$ is consistent, i.e., $\hat{\rho}_n \xrightarrow{P} \rho$, under certain mild conditions. The estimator $\hat{\rho}_n$ has an asymptotic bias, and the reduction of this bias is dependant on the choice of m as well as the tuning parameter τ . Fortunately, the adaptive algorithm given in Caeiro and Gomes [2015, Section 4.1] provides an effective method of bias correction by choosing m and τ via the most stable sample path of $\hat{\rho}_n$. Details of the full estimation procedure are given in appendix B.1.

Estimation of $A(n/k)$. As part of a secondary contribution of this paper, we derive an estimator for $A(n/k)$ in order to estimate $\hat{c}_{\epsilon, \alpha}^{(n)}$ from i.i.d. samples. Following the formulation of Haouas et al. [2018], we adapt their estimator for $A_0(n/k)$ to non-truncated data. Then, using the relation between A_0 and A in De Haan and Ferreira [2006, Table 3.1], an estimator for $A(n/k)$ is

$$\hat{A}_n \triangleq \frac{(\hat{\xi}_{\text{MLE}}^{(n)} + \hat{\rho}_n)(1 - \hat{\rho}_n)^2(\hat{M}_n^{(2)} - 2(\hat{M}_n^{(1)})^2)}{2\hat{\xi}_{\text{MLE}}^{(n)}\hat{\rho}_n\hat{M}_n^{(1)}}, \quad (13)$$

where we define $\hat{M}_n^{(j)} \triangleq M_n^{(j)}(k)$. The proof that \hat{A}_n is consistent in the sense that $\hat{A}_n/A(n/k) \xrightarrow{P} 1$ is given in appendix A.5.

Estimation of $b_{\xi, \rho}$. To obtain a consistent estimator for $b_{\xi, \rho}$, it suffices to plug in any consistent estimators for ξ and ρ into eq. (11), which follows from the continuous mapping theorem (see, for example, Vaart [1998, Theorem

2.3]). Since $\hat{\xi}_{\text{MLE}}^{(n)} \xrightarrow{P} \xi$ by theorem 4.1, we set

$$\hat{b}_n = (\hat{b}_n^{(1)}, \hat{b}_n^{(2)}) \triangleq \frac{[\hat{\xi}_{\text{MLE}}^{(n)} + 1, -\hat{\rho}_n]}{(1 - \hat{\rho}_n)(1 + \hat{\xi}_{\text{MLE}}^{(n)} - \hat{\rho}_n)} \quad (14)$$

as an estimator for $b_{\xi, \rho}$, where $\hat{b}_n \xrightarrow{P} b_{\xi, \rho}$. We now give bias-corrected estimates of the GPD parameters, which we define by

$$\hat{\xi}_n \triangleq \hat{\xi}_{\text{MLE}}^{(n)} - \hat{A}_n \hat{b}_n^{(1)}, \quad \hat{\sigma}_n \triangleq \hat{\sigma}_{\text{MLE}}^{(n)}(1 - \hat{A}_n \hat{b}_n^{(2)}). \quad (15)$$

The following theorem shows that $\hat{\xi}_n$ and $\hat{\sigma}_n$ are asymptotically normal and centered with the same asymptotic variance Σ as in eq. (11).

Theorem 4.2. *Suppose that the assumptions of theorem 4.1 hold. Then*

$$\sqrt{k}(\hat{\xi}_n - \xi, \hat{\sigma}_n/a(n/k) - 1) \xrightarrow{d} N(0, \Sigma).$$

Having now established estimators for all required distributional parameters, in the next section we introduce estimators for $c_{u, \alpha}$ and $\epsilon_{u, \alpha}$. Using this result, we derive an asymptotically unbiased estimator and confidence interval for c_α .

5 UNBIASED POT ESTIMATOR

Using theorem 4.2, a new estimator for $c_{u, \alpha}$ can be constructed from eq. (7), which we then show is asymptotically normal and centered. The only missing requirement is an estimate for $F(u)$, which, with $u = X_{(n-k, n)}$, can be obtained using the empirical distribution function, i.e., $\hat{F}_n(u) = 1 - k/n$.

Definition 5.1 (POT estimator). *Suppose that $(\hat{\xi}_n, \hat{\sigma}_n)$ are obtained from k threshold excesses with $\hat{\xi}_n < 1$. Then, an estimator for $c_{u, \alpha}$ at level $\alpha > 1 - k/n$ is*

$$\hat{c}_\alpha^{(n)} \triangleq \frac{\hat{\sigma}_n}{1 - \hat{\xi}_n} \left(1 + \frac{1}{\hat{\xi}_n} \left[\left(\frac{k}{n(1 - \alpha)} \right)^{\hat{\xi}_n} - 1 \right] \right) + X_{(n-k, n)}. \quad (16)$$

Typically, when the CVaR is estimated using the POT approach in the literature, e.g., McNeil et al. [2005], eq. (16) is used with $(\hat{\xi}_{\text{MLE}}^{(n)}, \hat{\sigma}_{\text{MLE}}^{(n)})$ in place of our estimators $(\hat{\xi}_n, \hat{\sigma}_n)$. Hence, the typical approach introduces two sources of bias with respect to the true CVaR: the bias from the MLEs and the bias from the misspecification of the threshold excesses by the GPD (which can be corrected using the GPD approximation error). The next theorem shows that $\hat{c}_\alpha^{(n)}$ is asymptotically unbiased with respect to $c_{u, \alpha}$.

Theorem 5.1. *Suppose that the assumptions of theorem 4.1 hold. Let $\alpha = \alpha_n = 1 - (1/\beta)k/n$ where $\beta > 1$ is a constant not depending on n . Let*

$$d_\beta(x, y) = \frac{y}{1 - x} \left(1 + \frac{\beta^x - 1}{x} \right).$$

If the contribution of variance by the random variable $\hat{F}_n(u)$ is ignored (it is approximately 0), then

$$\frac{\sqrt{k}}{a(n/k)} \left(\hat{c}_\alpha^{(n)} - c_{u,\alpha} \right) \xrightarrow{d} N(0, V), \quad (17)$$

where $V = \nabla d_\beta(\xi, 1)^\top \Sigma \nabla d_\beta(\xi, 1)$ and $\nabla d_\beta(\xi, 1)$ denotes the gradient of d_β evaluated at $(\xi, 1)$, given at the end of appendix A.3.

Remark 5.1. In the proof of theorem 5.1, we show that the remainder term involving $\hat{F}_n(u)$ would only add 1 to V if $\hat{F}_n(u)$ and $(\hat{\xi}_n, \hat{\sigma}_n)$ are asymptotically independent.

Remark 5.2. The conditions of theorem 5.1 imply that $\alpha \rightarrow 1$, however, this is not very restrictive in a practical setting since finite sample approximations will be valid for any fixed choice of α as long as $\alpha > 1 - k/n$, since β is arbitrary.

While $\hat{c}_\alpha^{(n)}$ is asymptotically unbiased with respect to $c_{u,\alpha}$, we still need to include the GPD approximation error to correct the remaining deviation induced by the GPD model. Using theorem 3.1, we can derive an estimator for the GPD approximation error, given by

$$\hat{e}_\alpha^{(n)} \triangleq \hat{\sigma}_n \hat{A}_n \hat{K}_n, \quad (18)$$

where $\hat{K}_n = K_{\hat{\xi}_n, \hat{\rho}_n}(k/(n(1-\alpha)))$, defined in eq. (8) with known values replaced by their respective estimators. We can now define the following estimator for the CVaR.

Definition 5.2 (Unbiased POT estimator). *The unbiased POT estimator is an estimator for the CVaR at level $\alpha > 1 - k/n$, which is defined for $\hat{\xi}_n < 1$, and is given by*

$$\hat{c}_{\epsilon,\alpha}^{(n)} \triangleq \hat{c}_\alpha^{(n)} - \hat{e}_\alpha^{(n)}. \quad (19)$$

Note that $\hat{c}_{\epsilon,\alpha}^{(n)}$ is asymptotically unbiased with respect to c_α , a statement which is made precise in the following theorem.

Theorem 5.2. *Suppose that the assumptions of theorem 5.1 hold. Then,*

$$\frac{\sqrt{k}(\hat{c}_{\epsilon,\alpha}^{(n)} - c_\alpha)}{\hat{\sigma}_n \sqrt{\hat{V}_n}} \xrightarrow{d} N(0, 1), \quad (20)$$

Where \hat{V}_n denotes a consistent estimator of V , which can be obtained by plugging in $\hat{\xi}_n$ into the expression for V given in theorem 5.1.

Corollary 5.1. *Based on the above limit, an asymptotic confidence interval with level $1 - \delta$ for c_α is*

$$C_\delta^n = \left(\hat{c}_{\epsilon,\alpha}^{(n)} - z_{\delta/2} \hat{\sigma}_n \sqrt{\hat{V}_n/k}, \hat{c}_{\epsilon,\alpha}^{(n)} + z_{\delta/2} \hat{\sigma}_n \sqrt{\hat{V}_n/k} \right), \quad (21)$$

where $z_{\delta/2}$ satisfies $\mathbb{P}(Z > z_{\delta/2}) = \delta/2$ with $Z \sim N(0, 1)$. Equation (21) has asymptotically correct coverage probability, i.e., $\mathbb{P}(c_\alpha \in C_\delta^n) \rightarrow 1 - \delta$ as $n \rightarrow \infty$.

6 NUMERICAL EXPERIMENTS

In this section, we investigate the finite sample performance of $\hat{c}_{\epsilon,\alpha}^{(n)}$ (denoted **UPOT** in this section) compared with the sample average estimator (eq. (3)), and POT estimator with no bias correction, i.e., eq. (16) with $(\hat{\xi}_n, \hat{\sigma}_n)$ replaced by $(\hat{\xi}_{\text{MLE}}^{(n)}, \hat{\sigma}_{\text{MLE}}^{(n)})$. Denote these estimators as **SA** and **BPOT**, respectively. First, in the theoretical setting, we compare the exact values of the asymptotic variance of **UPOT** and **SA** at different values of α and sample sizes on the Fréchet distribution. This analysis provides justification for the cases where **UPOT** is expected to perform better than **SA** on data. Next, we assess the statistical accuracy of the three estimation methods at different sample sizes among several classes of heavy-tailed distributions. Finally, we assess the accuracy of the asymptotic confidence interval given in eq. (21) on finite samples by using the empirical coverage probability.

6.1 COMPARISON OF ASYMPTOTIC VARIANCE

In this section, the magnitude of the asymptotic variance (AVAR) of **UPOT** and **SA** are compared. Since both estimators are asymptotically unbiased and assuming they are both efficient, the mean squared error of each estimator approaches the AVAR in large samples (by the Cramér-Rao lower bound). Hence, this comparison gives evidence of the distributional properties and level of α where **UPOT** results in lower error than **SA**. The comparison is made on the Fréchet distribution with single parameter γ , which has $\xi = 1/\gamma$, $\rho = -1$ (see appendix C.2). We compute V/k (given in theorem 5.1) with $n = 10000, 20000, \dots, 100000$ and set $k = \lceil n^{2/3} \rceil$ to satisfy the assumption of theorem 4.1. An expression for the AVAR of **SA** is given in, for example, Trindade et al. [2007], and we provide the details of this calculation for the Fréchet distribution in appendix C.2.1. To the best of our knowledge, the AVAR of **SA** can only be derived for distributions with a bounded second moment, which corresponds to distributions with $\xi < 1/2$ (or $\gamma > 2$ in the Fréchet case). The AVAR of **SA** and **UPOT** is compared for the Fréchet distribution with $\gamma = 2.25, 2.5, 3$ and $\alpha = 0.99, 0.999$ in fig. 1. The results indicate that **UPOT** is preferable for high values of α and low values of γ . Increasing α would lead to lower sample availability in **SA**, and thus higher variance, while **UPOT** is unaffected. Decreasing γ is equivalent to increasing ξ and thus increasing tail thickness. This increases the AVAR of **SA** since extreme observations are much further from the mean but not readily observed. Based on evidence from the Fréchet distribution, it is reasonable to extrapolate that **UPOT** should always perform better than **SA** on heavy-tailed distributions with $\xi \geq 1/2$ at high values of α .

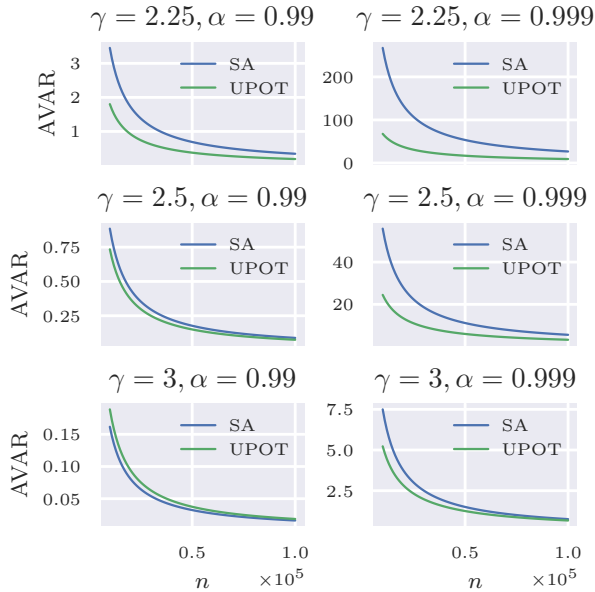


Figure 1: Asymptotic variance of the SA CVaR estimator (blue) and unbiased POT estimator (green) for the Fréchet(γ) distribution at $\alpha = 0.99, 0.999$.

6.2 ERROR ANALYSIS OF CVAR ESTIMATORS

In the experiments that follow, samples are generated from the Burr, Fréchet, and half- t distributions, which provide a good characterization of heavy-tailed phenomena with finite mean. Relevant details for each distribution class are provided in appendix C. The estimation performance of **SA**, **BPOT**, and **UPOT** are compared via the root-mean-square error (RMSE) on five examples from each distribution class, shown in fig. 2. Similar plots of the absolute bias are provided in appendix D. We fix $\alpha = 0.998$ as an example of an extreme risk level. Experiments are conducted as follows. Generate $N = 1000$ random samples of size 50000 from each distribution. For each sample, the CVaR is estimated using the three methods at sub-sample sizes $n = 5000, 10000, \dots, 50000$. In practice, it can be difficult to choose the number of threshold excesses k , and so we apply the ordered goodness-of-fits tests of Bader et al. [2018] to choose the optimal threshold. This threshold selection procedure, which we employ in both **BPOT** and **UPOT**, is given in detail in appendix B.2. The average threshold selected (in terms of the percentile of a given sample) was between 0.80 and 0.96 in all simulations performed. The complete algorithm for **UPOT** is summarized in appendix B.3. The chosen Burr distributions allow us to investigate the effect of varying ρ while keeping a fixed ξ . In this case, we set $\xi = 2/3$ while $\rho = -0.25, -0.33, -0.44, -1.33, -2.22$ in the respective Burr distributions. In general, when ρ approaches 0, the distribution's tail deviates more severely from a strict Pareto

model, and therefore we see the largest bias and RMSE occur in **BPOT** in the Burr(0.38, 4) and Burr(0.5, 3) models, while the bias-correction of **UPOT** leads to the most substantial performance gain. As a non-parametric estimator, **SA** is less affected by changes in the value of ρ , outperforming the POT estimators in terms of bias on some Burr distributions. However, as alluded to in section 6.1, high values of ξ leads to high variance in observations, typically causing poor performance in **SA** in terms of RMSE. This effect is similarly observed in the Fréchet simulations, where **SA** has relatively low bias. The Fréchet distribution always has $\rho = -1$, a property shared with the GPD, giving its tail a similar shape. Therefore, the bias-correction of **UPOT** is less significant, but still provides a noticeable performance gain over **BPOT**. The results of the half- t simulations are similar to the Fréchet, but we note a larger bias in **BPOT** due to the fact that the half- t distribution has a ρ value that varies with its parameter. Like in the Burr simulations, **SA** is unaffected by different values of ρ and obtains good performance in terms of bias in the half- t simulations, except when ξ is largest in the half- t (1.5) model. Finally, we note that **UPOT** consistently had the lowest RMSE in all simulations except in a few cases at a sample size of 5000. Next, the finite sample performance of the **UPOT** confidence interval is investigated.

6.3 COVERAGE PROBABILITY OF THE ASYMPTOTIC CONFIDENCE INTERVAL

The accuracy of the confidence interval given in eq. (21) is assessed by its empirical coverage probability for each distribution using the same simulated data from section 6.2. Let $C_{i,\delta}^n$ denote the confidence interval computed for a sample of size n for sample $i, i = 1, \dots, N$. Then, the empirical coverage probability is defined as

$$\hat{P}_\delta^n(N) = \frac{1}{N} \sum_{i=1}^N \mathbb{1}_{\{c_\alpha \in C_{i,\delta}^n\}}.$$

Plots of the coverage probability at each sample size for each distribution are shown in fig. 3. We set $\delta = 0.05$ and compute the coverage probability at sample sizes $n = 5000, 10000, \dots, 50000$. The final value of each distribution's coverage probability at $n = 50000$ is reported in appendix D. Most of the distributions tested achieve nearly the correct coverage of 0.95, sometimes surpassing it in some cases, and this is due to the estimated confidence interval being wider than its true asymptotic counterpart. The coverage is worst in the Burr(0.38, 4) distribution, achieving a final coverage probability of just 0.73. The small magnitude of ρ in this distribution causes slow convergence of the tail to the GPD, and hence a relatively high average threshold percentile of 0.96 was chosen by the threshold selection procedure. This high threshold increases the variance of parameter estimation which explains the poor coverage.

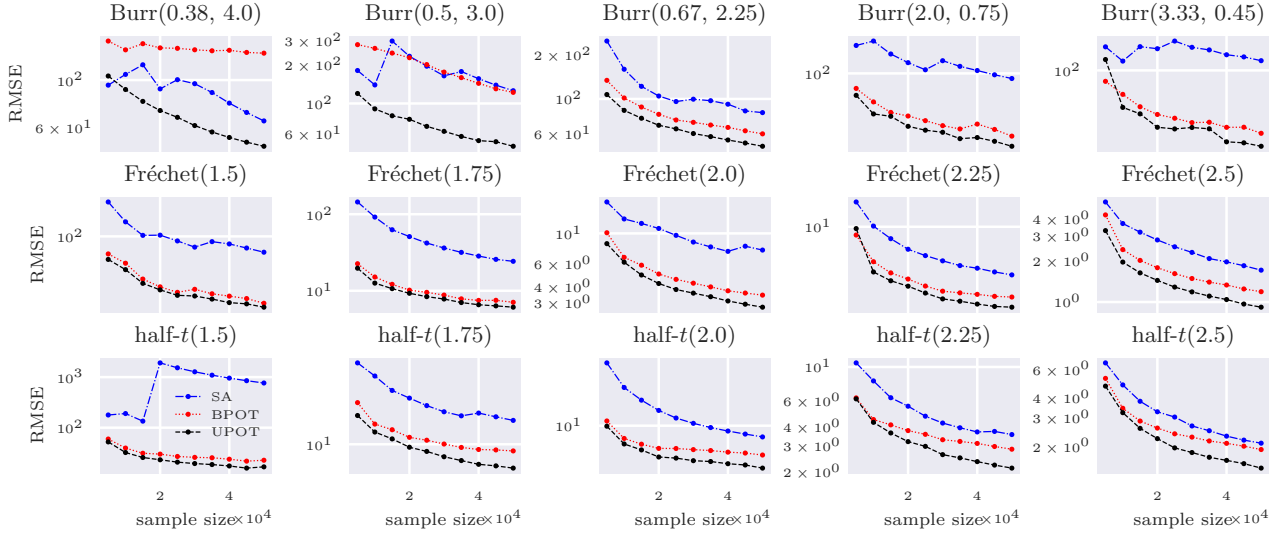


Figure 2: RMSE of estimating $\text{CVaR}_{0.998}$ using **UPOT** (black), **BPOT** (red), and **SA** (blue).

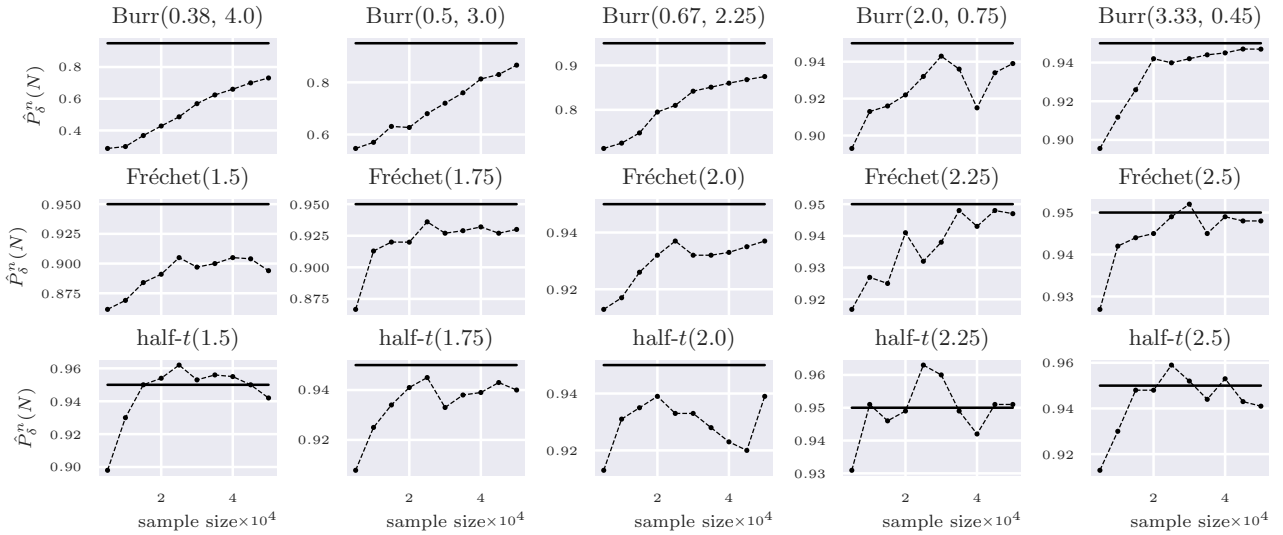


Figure 3: Coverage probabilities with $\alpha = 0.998, \delta = 0.05$. The solid line indicates the theoretical coverage, i.e., $1 - \delta = 0.95$.

7 CONCLUSION

We have studied the asymptotic properties of a new CVaR estimator based on the peaks-over-threshold approach. Using extreme value theory and second-order regular variation, we derived estimators for the bias induced by the approximate GPD model of the threshold excesses and the bias from maximum likelihood estimators of the GPD parameters. Using these results, we proved that our estimator is asymptotically normal and unbiased (up to some technical conditions). This convergence result allowed us to derive confidence intervals for the CVaR, enabling us to measure the level of uncertainty in our estimator. We compared the magnitudes of the

asymptotic variance of our CVaR estimator with that of the sample average CVaR estimator, demonstrating a significant improvement in asymptotic performance for some cases. An empirical study showed that our CVaR estimator can lead to a significant performance improvement in heavy-tailed distributions when compared to the sample average estimator and the existing peaks-over-threshold estimator. Finally, we investigated the finite-sample performance of the asymptotic confidence interval, and found that good coverage probability is achieved in reasonable sample sizes. While our evidence suggests that our CVaR estimator is most effective in the heavy-tailed domain, it would also be instructive to perform the same theoretical analysis for

light-tailed distributions. Doing so would allow our CVaR estimator to be robust to situations where it is not possible to make any assumptions about the underlying data distribution.

Acknowledgements

Financial support from Natural Sciences and Engineering Research Council of Canada (NSERC, Godin: RGPIN-2017-06837, Yu: RGPIN-2018-05096) is gratefully acknowledged. We would like to thank Méлина Mailhot for her valuable feedback.

References

- Carlo Acerbi and Dirk Tasche. On the coherence of expected shortfall. *Journal of Banking & Finance*, 26(7):1487–1503, 2002.
- Brian Bader, Jun Yan, Xuebin Zhang, et al. Automated threshold selection for extreme value analysis via ordered goodness-of-fit tests with adjustment for false discovery rate. *The Annals of Applied Statistics*, 12(1):310–329, 2018.
- August A Balkema and Laurens De Haan. Residual life time at great age. *The Annals of probability*, pages 792–804, 1974.
- Sanjay P. Bhat and Prashanth L.A. Concentration of risk measures: A Wasserstein distance approach. In H. Wallach, H. Larochelle, A. Beygelzimer, F. Alché-Buc, E. Fox, and R. Garnett, editors, *Advances in Neural Information Processing Systems* 32, pages 11762–11771. Curran Associates, 2019.
- Vytaras Brazauskas, Bruce L. Jones, Madan L. Puri, and Ričardas Zitikis. Estimating conditional tail expectation with actuarial applications in view. *Journal of Statistical Planning and Inference*, 138(11):3590 – 3604, 2008. ISSN 0378-3758. doi: <https://doi.org/10.1016/j.jspi.2005.11.011>. URL <http://www.sciencedirect.com/science/article/pii/S0378375808001018>. Special Issue in Honor of Junjiro Ogawa (1915 - 2000): Design of Experiments, Multivariate Analysis and Statistical Inference.
- David B. Brown. Large deviations bounds for estimating conditional value-at-risk. *Operations Research Letters*, 35:722–730, 2007.
- Frederico Caeiro and M. Ivette Gomes. Bias reduction in the estimation of a shape second-order parameter of a heavy-tailed model. *Journal of Statistical Computation and Simulation*, 85(17):3405–3419, 2015. doi: 10.1080/00949655.2014.975707.
- Yinlam Chow and Mohammad Ghavamzadeh. Algorithms for CVaR optimization in MDPs. In Z. Ghahramani, M. Welling, C. Cortes, N. Lawrence, and K. Q. Weinberger, editors, *Advances in Neural Information Processing Systems*, volume 27, pages 3509–3517. Curran Associates, Inc., 2014. URL <https://proceedings.neurips.cc/paper/2014/file/82cadb0649a3af4968404c9f6031b233-Paper.pdf>.
- Abdelaati Daouia, Stéphane Girard, and Gilles Stupfler. Estimation of tail risk based on extreme expectiles. *Journal of the Royal Statistical Society: Series B (Statistical Methodology)*, 80(2): 263–292, 2018. doi: <https://doi.org/10.1111/rssb.12254>. URL <https://rss.onlinelibrary.wiley.com/doi/abs/10.1111/rssb.12254>.
- Laurens De Haan and Ana Ferreira. *Extreme Value Theory: An Introduction*. Springer-Verlag New York, 2006. doi: 10.1007/0-387-34471-3.
- Holger Drees, Ana Ferreira, and Laurens de Haan. On maximum likelihood estimation of the extreme value index. *The Annals of Applied Probability*, 14(3):1179–1201, 2004. ISSN 10505164. URL <http://www.jstor.org/stable/4140470>.
- Maria Fraga Alves, Maria Gomes, and Laurens Haan. A new class of semi-parametric estimators of the second order parameter. *Portugaliae Mathematica*, 60:193–213, 01 2003.
- Stéphane Girard, Gilles Stupfler, and Antoine Usseglio-Carleve. On automatic bias reduction for extreme expectile estimation. working paper or preprint, January 2021. URL <https://hal.archives-ouvertes.fr/hal-03086048>.
- Scott D. Grimshaw. Computing maximum likelihood estimates for the generalized Pareto distribution. *Technometrics*, 35(2):185–191, 1993. ISSN 00401706. URL <http://www.jstor.org/stable/1269663>.
- Peter Hall. On some simple estimates of an exponent of regular variation. *Journal of the Royal Statistical Society. Series B (Methodological)*, 44(1):37–42, 1982. ISSN 00359246. URL <http://www.jstor.org/stable/2984706>.
- Nawel Haouas, Abdelhakim Necir, and Brahim Brahimi. Estimating the second-order parameter of regular variation and bias reduction in tail index estimation under random truncation. *Journal of Statistical Theory and Practice*, 13, 10 2018.
- Takuya Hiraoka, Takahisa Imagawa, Tatsuya Mori, Takashi Onishi, and Yoshimasa Tsuruoka. Learning

- robust options by conditional value at risk optimization. In H. Wallach, H. Larochelle, A. Beygelzimer, F. d'Alché Buc, E. Fox, and R. Garnett, editors, *Advances in Neural Information Processing Systems*, volume 32, pages 2619–2629. Curran Associates, Inc., 2019. URL <https://proceedings.neurips.cc/paper/2019/file/49b8b4f95f02e055801da3b4f58e28b7-Paper.pdf>.
- Anmol Kagrecha, Jayakrishnan Nair, and Krishna Jagannathan. Distribution oblivious, risk-aware algorithms for multi-armed bandits with unbounded rewards. In H. Wallach, H. Larochelle, A. Beygelzimer, F. Alché-Buc, E. Fox, and R. Garnett, editors, *Advances in Neural Information Processing Systems 32*, pages 11272–11281. Curran Associates, 2019.
- Ramtin Keramati, Christoph Dann, Alex Tamkin, and Emma Brunskill. Being optimistic to be conservative: Quickly learning a CVaR policy. *Proceedings of the AAAI Conference on Artificial Intelligence*, 34(04):4436–4443, Apr. 2020. doi: 10.1609/aaai.v34i04.5870. URL <https://ojs.aaai.org/index.php/AAAI/article/view/5870>.
- Ravi Kumar Kolla, Prashanth L. A., Sanjay P. Bhat, and Krishna P. Jagannathan. Concentration bounds for empirical conditional value-at-risk: The unbounded case. *CoRR*, abs/1808.01739, 2018. URL <http://arxiv.org/abs/1808.01739>.
- Ravi Kumar Kolla, Prashanth L. A., and Krishna P. Jagannathan. Concentration bounds for CVaR estimation: The cases of light-tailed and heavy-tailed distributions. *CoRR*, abs/1901.00997, 2019. URL <http://arxiv.org/abs/1901.00997>.
- Kirsi Manz and Ulrich Mansmann. Distributional challenges regarding data on death and incidences during the SARS-CoV-2 pandemic up to July 2020. *medRxiv*, 2020. doi: 10.1101/2020.07.24.20161257. URL <https://www.medrxiv.org/content/early/2020/07/24/2020.07.24.20161257>.
- Alexander J McNeil, Rüdiger Frey, and Paul Embrechts. *Quantitative risk management: Concepts, techniques and tools*, volume 3. Princeton university press Princeton, 2005.
- James Pickands III. Statistical inference using extreme order statistics. *the Annals of Statistics*, 3(1):119–131, 1975.
- J.-P. Raoult and R. Worms. Rate of convergence for the generalized Pareto approximation of the excesses. *Advances in Applied Probability*, 35(4):1007–1027, 2003. doi: 10.1239/aap/1067436332.
- Lihua Sun and L. Jeff Hong. Asymptotic representations for importance-sampling estimators of value-at-risk and conditional value-at-risk. *Operations Research Letters*, 38(4):246 – 251, 2010. ISSN 0167-6377. doi: <https://doi.org/10.1016/j.orl.2010.02.007>. URL <http://www.sciencedirect.com/science/article/pii/S0167637710000234>.
- Aviv Tamar, Yonatan Glassner, and Shie Mannor. Optimizing the CVaR via sampling. In *Proceedings of the Twenty-Ninth AAAI Conference on Artificial Intelligence, AAAI'15*, page 2993–2999. AAAI Press, 2015. ISBN 0262511290.
- Philip Thomas and Erik Learned-Miller. Concentration inequalities for conditional value at risk. In Kamalika Chaudhuri and Ruslan Salakhutdinov, editors, *Proceedings of the 36th International Conference on Machine Learning*, volume 97 of *Proceedings of Machine Learning Research*, pages 6225–6233, Long Beach, California, USA, 09–15 Jun 2019. PMLR.
- Léonard Torossian, Aurélien Garivier, and Victor Picheny. \mathcal{X} -armed bandits: Optimizing quantiles, CVaR and other risks. In Wee Sun Lee and Taiji Suzuki, editors, *Proceedings of The Eleventh Asian Conference on Machine Learning*, volume 101 of *Proceedings of Machine Learning Research*, pages 252–267, Nagoya, Japan, 17–19 Nov 2019. PMLR. URL <http://proceedings.mlr.press/v101/torossian19a.html>.
- A. Alexandre Trindade, Stan Uryasev, Alexander Shapiro, and Grigory Zrazhevsky. Financial prediction with constrained tail risk. *Journal of Banking & Finance*, 31(11):3524 – 3538, 2007. ISSN 0378-4266. doi: <https://doi.org/10.1016/j.jbankfin.2007.04.014>. URL <http://www.sciencedirect.com/science/article/pii/S0378426607001392>. Risk Management and Quantitative Approaches in Finance.
- A. W. van der Vaart. *Asymptotic Statistics*. Cambridge Series in Statistical and Probabilistic Mathematics. Cambridge University Press, 1998. doi: 10.1017/CBO9780511802256.